

4" T5 CYLINDER WITH DOWNLIGHT

DELRAY
LIGHTING
INCORPORATED

6300-4" T5



TYPE:

PROJECT:

ORDER NUMBER:

Model#	Wattage	Finish	Voltage	Ballast	Downlight
	14	S -silver	1 -120V	SD3 -dimming	B4MR16
	21	W -white	2 -277V	SD5 -dimming	
	24			SD8 -dimming	
	28			SD9 -dimming	
	39				
	54				

Example:

6306	54	W	2	D3	B6MR16
------	----	---	---	----	--------

Other Options:

CRB-remote ballast

BLA/RB-remote ballast
with ball aligner

BLA-pipe mount

B4XP-extra pendant length
(inches):

CONSTRUCTION

- Matte white acrylic diffuser provides even illumination.
- cUL listed for damp locations.

CANOPY

- **W**-white or **S**-silver, with matching cord.
- Flat, 5.5" o.d., mounts to standard J-box.
- Standard mount is 6 ft. power cord. Order **B4XP** for additional power cord length.
- Hard stem also available. Order **BLA**.

BALLASTS

- Standard ballast is program start, HPF electronic, mounted in 3" diameter tube at ceiling.
- See back page for dimming ballasts. 3.5 ft. maximum pendant.
- Emergency not available.
- Above ceiling mount available for accessible ceiling only: order **CRB**.
- Ballast Canopy Dimensions:

Configuration	Ht.*
Standard	16.3"
MR16	17.8"
Dimming	20.3"
MR16 + Dimming	21.8"

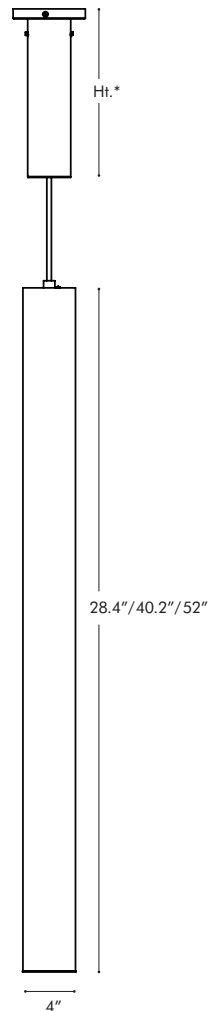
OPTIONAL DOWNLIGHT

- Order **B4MR16**.
- 9W max.
- Uses LED MR16 2-pin lamps (by others).

6304-2 ft. T5, 1x 14/24W

6305-3 ft. T5, 1x 21/39W

6306-4 ft. T5, 1x 28/54W



BURBANK,
CALIFORNIA,
91505
WWW.
DELRAY
LIGHTING.
COM

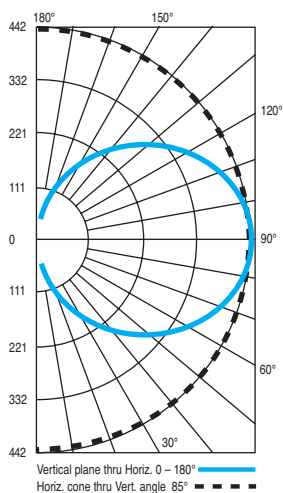
MAR 2012

T5

6304
6305
6306



CP DISTRIBUTION



COEFFICIENTS

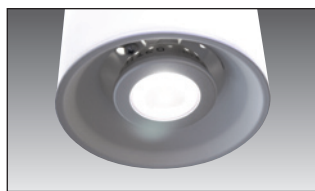
% CEILING 80 (20% FLOOR)			
% WALL	70	50	30
0	88	88	88
1	75	70	65
2	67	58	51
3	60	50	42
4	54	43	35
5	49	38	29
6	45	33	25
7	41	30	22
8	38	27	19
9	35	24	17
10	33	22	15

NOTES

6306
1-54W T5 HO
T5 miniature bi-pin socket
Total lumens: 3850 mean
Total luminaire efficiency: 82%

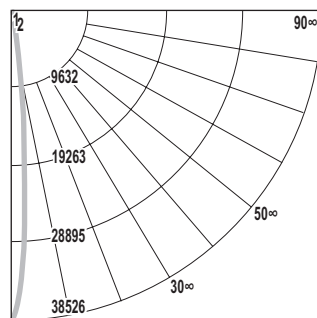
LED MR16

B4MR16—4" downlight. 9W max.

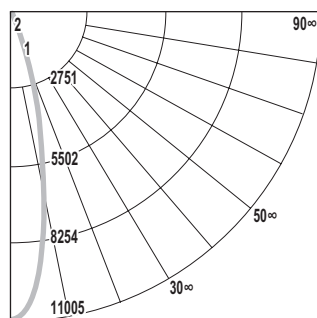


CP DISTRIBUTION

SPOT



FLOOD



ACRYLIC DIFFUSER CLEANING

Warning: Do not clean with ammonia based cleaners (e.g. Windex®). Use only water or cleaners specifically formulated for cleaning plastics.

OPTIONS

MOUNTING

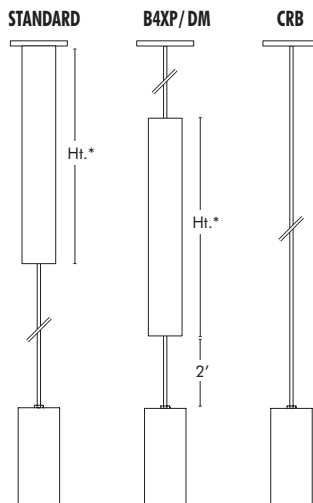
PIPE MOUNT

Order **BLA** mount for 3/8" IPS pipe. Length must be specified. Includes ball aligner canopy rated for 75 lbs. and mounts to standard J-boxes (below, left). Not for windy locations.

Pipe longer than 8 ft. will be shipped in two pieces—one 8 ft. section plus a second section for the balance—supplied with a painted, threaded pipe coupler, with set screws (below, right).



4" BALLAST CONFIGURATIONS



*Height: see Ballast Canopy Dimensions, first page.

BALL ALIGNER OPTION

Order **BLA**.

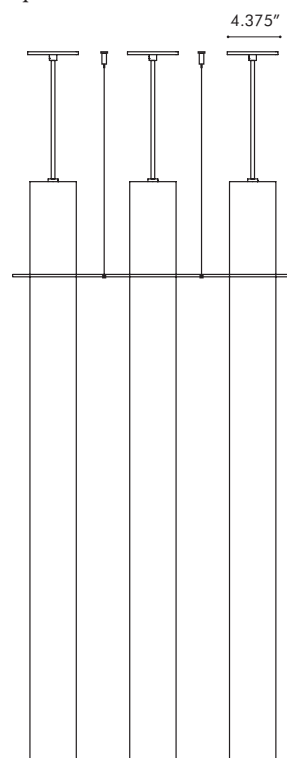


DIMMING

- T5—14, 21, 24, 28 39, 54W
- Maximum 3.5 feet.
- **SD3**—Advance Mark X, 54W *only*
- **SD5**—Advance Mark VII
- **SD8**—Lutron Hi Lume FDB
- **SD9**—Lutron Eco System

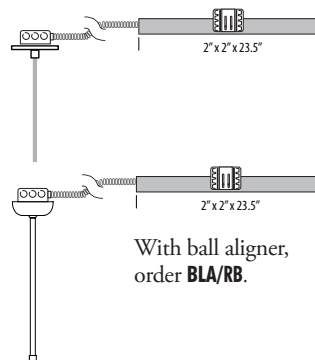
MULTI-TUBE CONFIGURATIONS

Standard and custom solid acrylic collars may be added for decoration and earthquake code compliance. (Shown with **CRB** option).



REMOTE BALLAST

Install ballast enclosure (supplied) maximum 14 ft. from fixture; must remain accessible. Order **CRB**.



With ball aligner, order **BLA/RB**.